



Main applications

- Timer
- Delay timer

Main features

- Three time ranges
- Two relay outputs
- Digital setting

GENERAL

The 55 is a timer with internally generated frequency base.

The time range is selected using the yellow thumbwheel switch according to the positions:

- A** (9.99 sec),
- B** (99.9 sec),
- C** (999 sec).

Afterwards the time set is selected using the numerical thumbwheel switches.

TECHNICAL DATA

OUTPUT

Relay

5A, 250Vac $\cos\phi=1$ (3,5A at $\cos\phi = 0,4$)

POWER SUPPLY

- 24/48Vac $\pm 10\%$, 50/60Hz, 6VA max.
- 110/220, 120/240Vac $\pm 10\%$
- 24Vdc $\pm 10\%$
- 50/60Hz, 3VA max.

AMBIENT CONDITIONS

Working temperature: 0...50°C

Storage temperature: -20...70°C

Humidity: 20...85%Ur non condensing

FUNCTIONS

Timer start on power-on.

Repeatability: $\pm 1\%$ of selected value at nominal conditions (20°C and nominal voltage value).

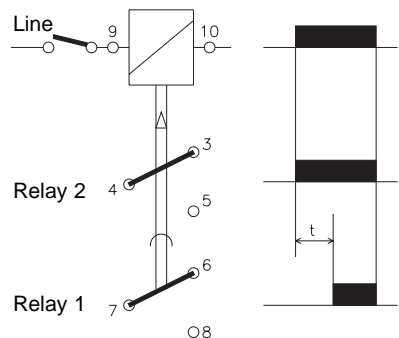
Accuracy, $\pm 1\%$ selected value.

Reset time, 200 msec.

WEIGHT

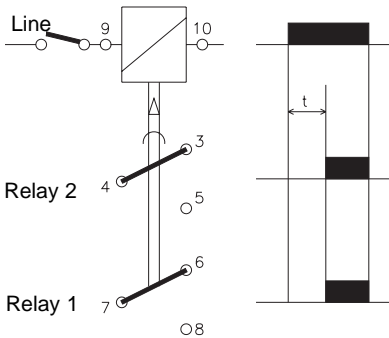
300 g

MAIN FUNCTIONS



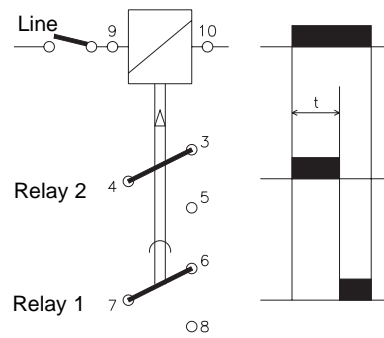
Mod. 55/2

Timer with one time relay (Relay 1) and one instantaneous relay (Relay 2).
Timing starts through connection to the power supply voltage.
Relay 1 energises at the end of timing t .
Relay 2 energises instantaneously when line switch closes.



Mod. 55/3

Timer with two time relays in parallel.
Timing starts through connection to the power supply voltage.
Relay 1 and relay 2 energise at the end of timing t .

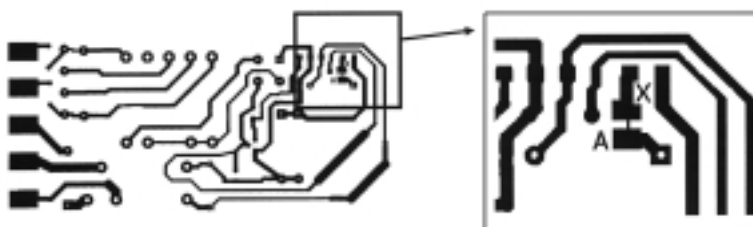


Mod. 55/4

Timer with one time relay (Relay 1) and Relay 2 in opposition.
Relay 1 is de-energised during timing and energised at the end of time t .
Relay 2 is energised during timing and de-energised at the end of time t .

JUMPERS DESCRIPTION

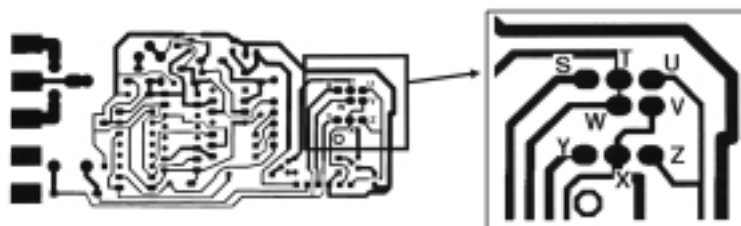
Power supply board / Copper side



Jumpers configuration:

Mod. 55/2
T-W, X-Y, A-X CLOSED
The other ones are OPEN

Logic board / Copper side



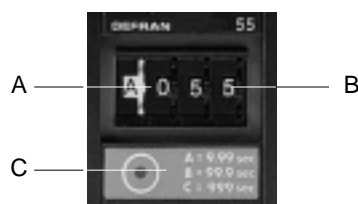
Mod. 55/3
T-W, T-S, X-2, A-X CLOSED
The other ones are OPEN

Mod. 55/4
T-W, X-Y CLOSED
The other ones are OPEN

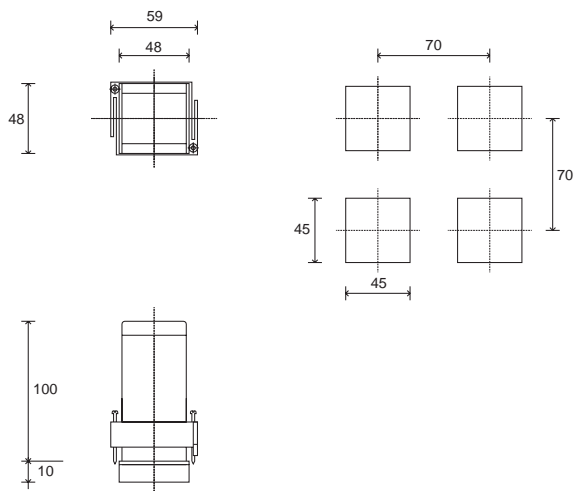
FACEPLATE DESCRIPTION

- A - Full scale preset
- B - Time Set
- C - Red LED for timing indication

IP20 faceplate protection, IP65 available with silicon rubber cover cod. **51183** (see accessories)

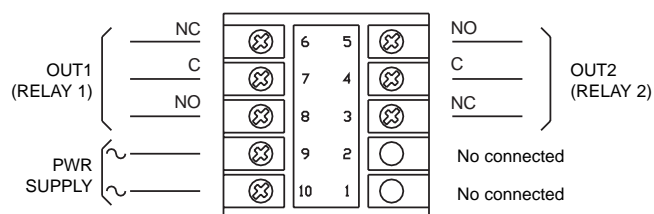


DIMENSIONS AND CUT-OUT



Dimensions: 48x48mm (1/16 DIN), depth 100mm

CONNECTION DIAGRAM



Apply user's manual warnings for a correct installation

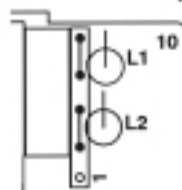
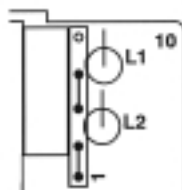
POWER SUPPLY SELECTION

Power supply board



Position 1
48Vac, 220Vac, 240Vac

Position 2
24Vac, 110Vac, 120Vac



ORDER CODE

55 

VERSION	
1 time relay + 1 instantaneous relay (relay 2)	2
2 time relays in parallel	3

POWER SUPPLY	
24Vdc	0
24Vac (48Vac) (*)	4
220Vac (110Vac) (*)	2
240Vac (120Vac) (*)	3

(*) Power supply voltage selectable by jumper

Please, contact GEFRAN sales people for the codes availability.

GEFRAN spa reserves the right to make any kind of design or functional modification at any moment without prior notice



The instrument conforms to the European Directives 2004/108/CE and 2006/95/CE with reference to the generic standards:
EN 61000-6-2 (immunity in industrial environment) **EN 61000-6-3** (emission in residential environment) **EN 61010-1** (safety)

GEFRAN

GEFRAN spa via Sebina, 74 - 25050 Provaglio d'Iseo (BS)
Tel. 03098881 - fax 0309839063 - Internet: <http://www.gefran.com>

DTS_55_0509_ENG